



GMT MONTHLY MEMBERSHIP PROGRESS REPORT

Results as of: 10/31/2019

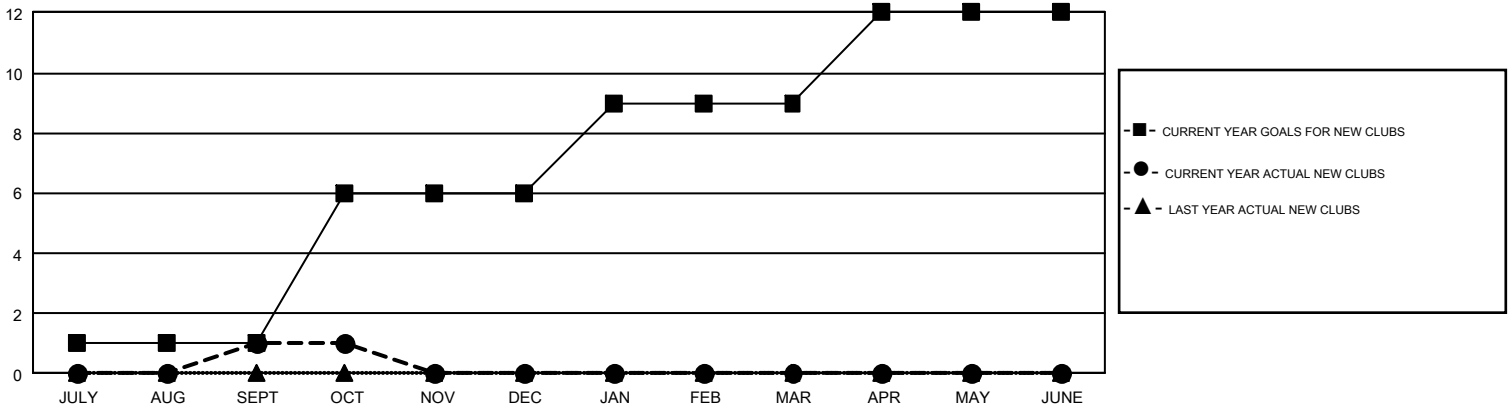
GMT Constitutional Area 5 - J, Group I

GMT: OPEN

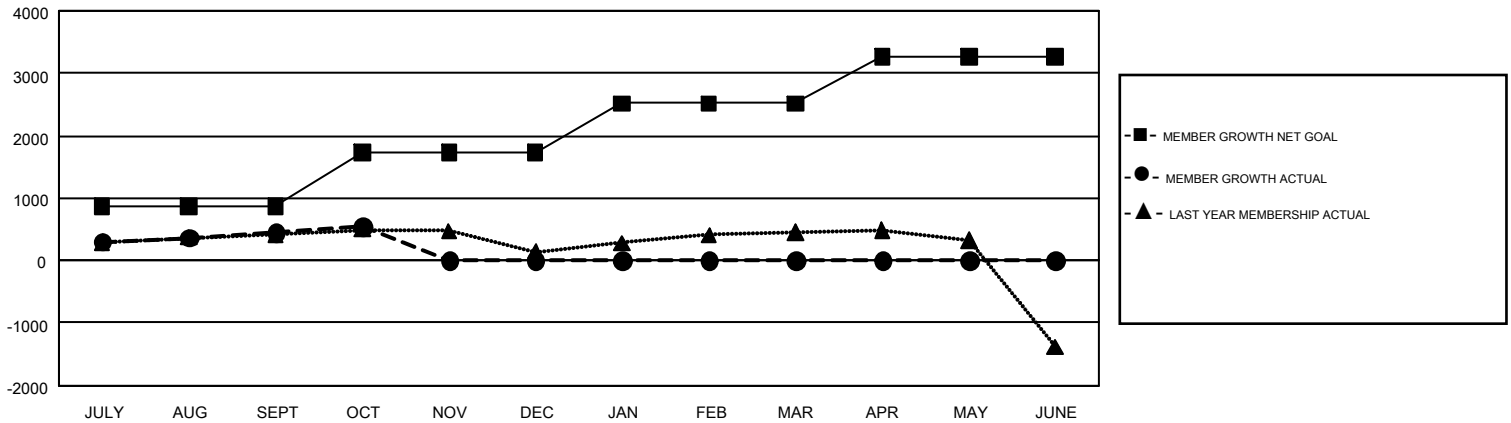
REPORT DOES NOT INCLUDE CLUBS IN UNDISTRICTED AREAS.

| Clubs | | | | Members | | | |
|-----------------------|---------------|-----------|---------------|-----------------------|------------------------|----------------------|--|
| RESULTS FOR 2019-2020 | | | | RESULTS FOR 2019-2020 | | | |
| QUARTER | NEW CLUB GOAL | NEW CLUBS | DROPPED CLUBS | QUARTER | MEMBER GROWTH NET GOAL | MEMBER GROWTH ACTUAL | DROPPED MEMBERS ACTUAL (including transfers) |
| JULY/AUG/SEPT | 1 | 1 | 2 | JULY/AUG/SEPT | 865 | 1,034 | 525 |
| OCT/NOV/DEC | 5 | 0 | 0 | OCT/NOV/DEC | 866 | 194 | 98 |
| JAN/FEB/MAR | 3 | 0 | 0 | JAN/FEB/MAR | 786 | 0 | 0 |
| APR/MAY/JUNE | 3 | 0 | 0 | APR/MAY/JUNE | 755 | 0 | 0 |

GOALS AND ACTUAL NEW CLUBS CUMULATIVE



GOALS AND ACTUAL MEMBERS CUMULATIVE



| | | |
|---|---|---|
| DROPPED CLUBS: 2 | 490 CLUBS OF 816 ADDED 1 OR MORE NEW MEMBERS | GENDER DISTRIBUTION MALE 26,478 (73.66%) FEMALE 9,467 (26.34%) |
| DROPPED MEMBERS DECEASED 99 CLUB CANCELLED 25 OTHER 499 <hr/> TOTAL 623 | CLICK HERE FOR CUMULATIVE MEMBERSHIP DATA | TOTAL FAMILY UNIT MEMBERS 15,687 FAMILY MEMBERS PAYING HALF DUES 8,402 |